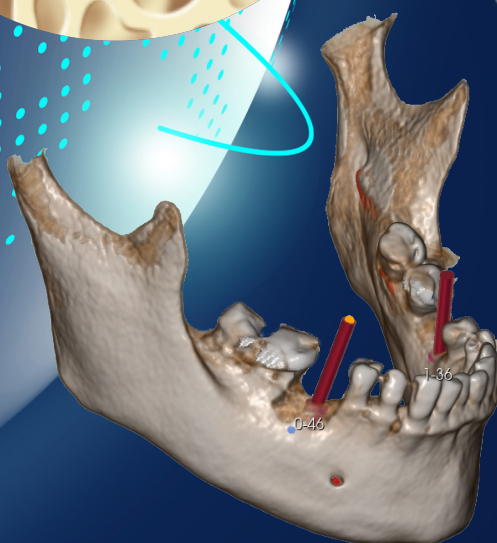
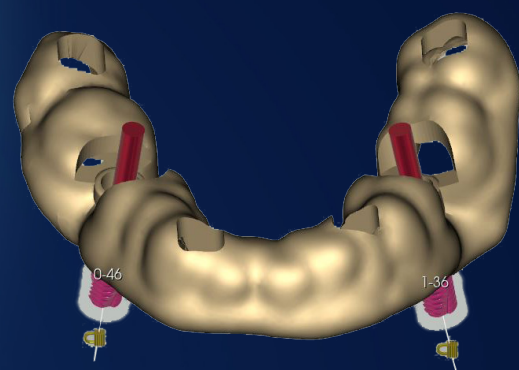
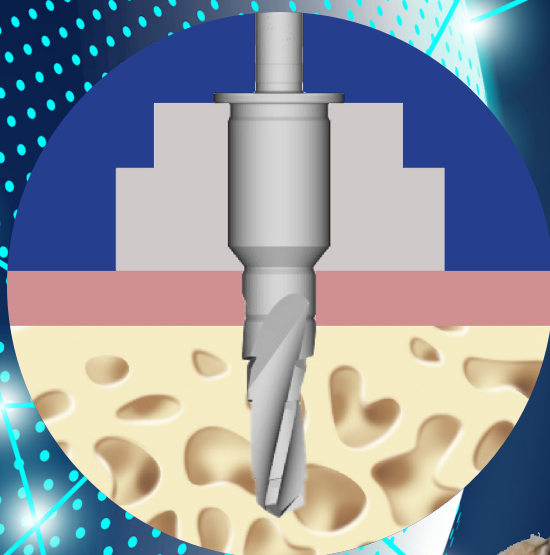


NEW

GUIDED SURGERY

**D**ialog

IMPLANT  
SYSTEM





# Dialog Guided Surgery

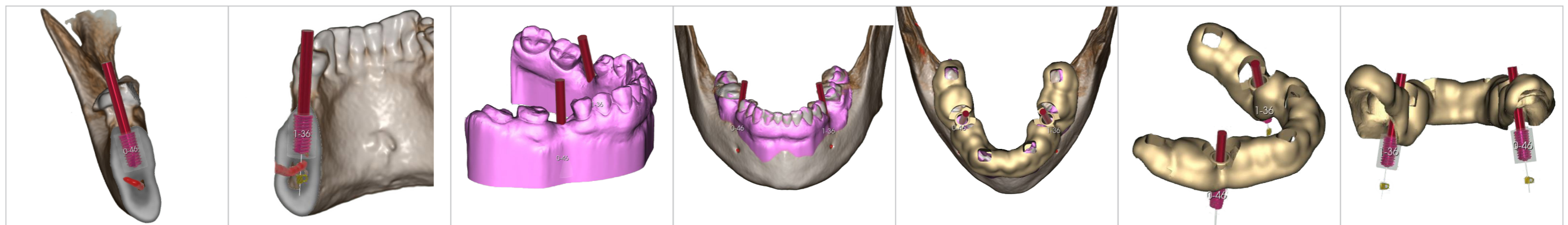
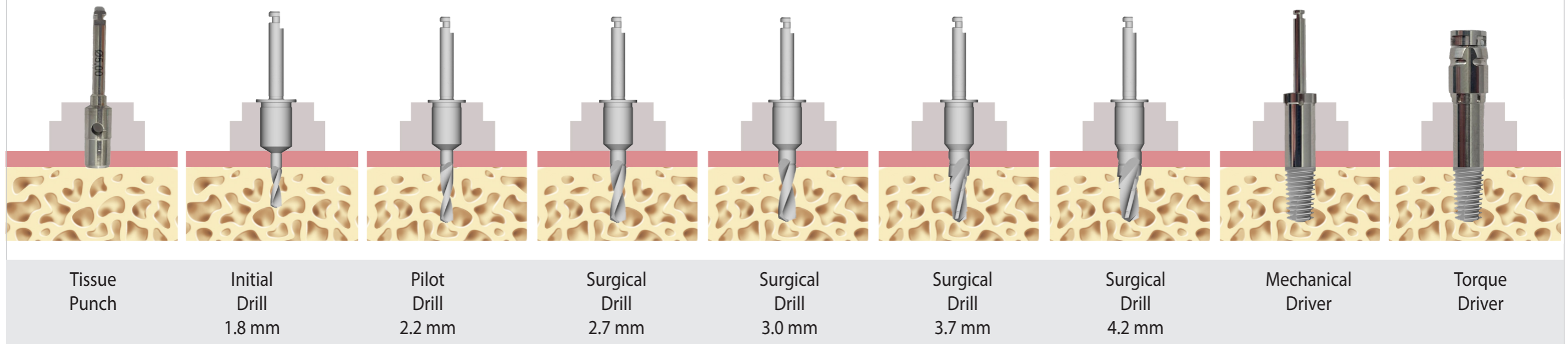
## DIALOG GUIDE TRAY

(REF. 740626)

- Simplified insertion using surgical guide
- Full guided implants insertion
- Fast surgery after planning

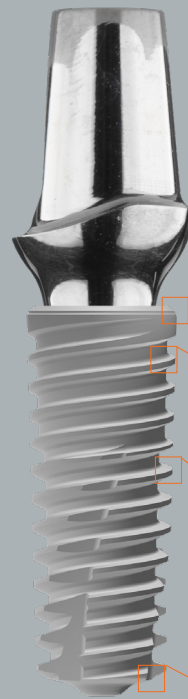


E.G. IMPLANT DIALOG Ø 4.2 x 9.5 mm



# DIALOG LINE

Dialog implants are made of medical grade 4 titanium with a conical shaped body. The 11° internal conical connection with hexagonal positioning index provides a good mechanical seal and excellent load distribution. The thread-design with differentiated depth in the crestal-apical direction promotes the self-threading capacity and excellent primary stability of the implant.



**Platform Switching**

- Maintenance of biological amplitude
- Reasonable stress distribution to avoid bone resorption

**Crestal thread design**

- Reduced thread depth allows
- Stress reduction in dense bone
  - Prevention of marginal bone loss

**Thread characteristics**

- Double pitch thread
- Self threading
- Improved stress reduction
- Excellent primary stability in all bone qualities

**Apex design**

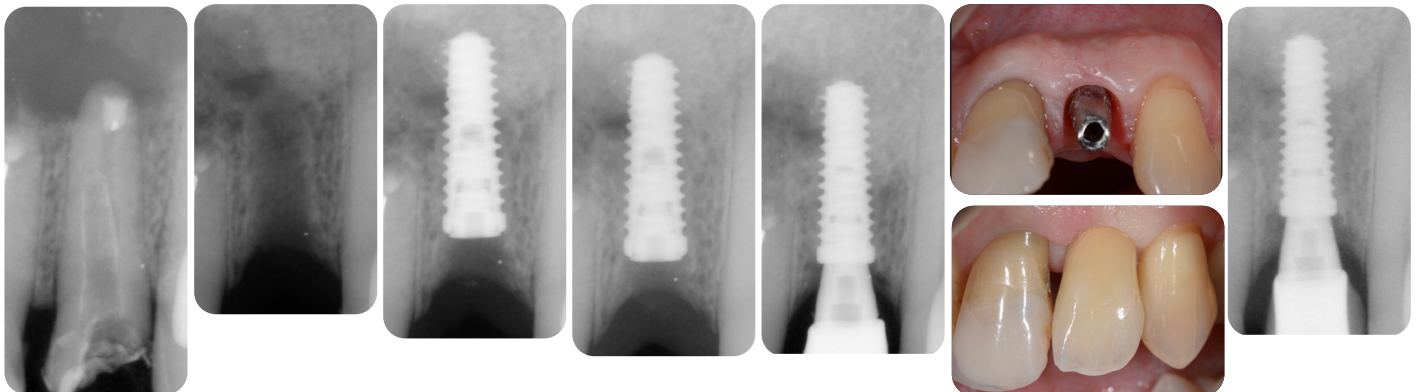
- Round shaped apex promotes Sinus-Lifting procedures
- Increases primary stability in delayed immediate implantation
- Supports primary stability in soft bone quality



**Internal hexagonal connection anti-rotational**



## Clinical Case



Photos courtesy of Dr. G. Renda  
Illustrations may differ.

