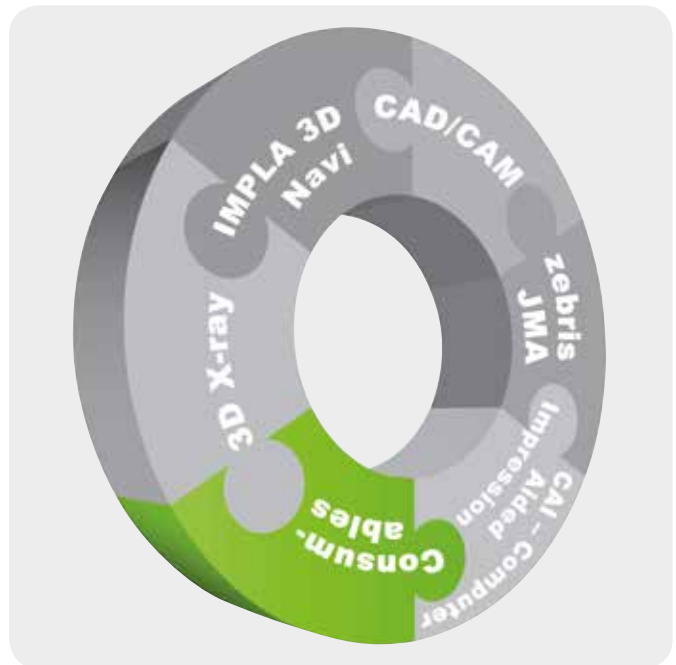


# Tizian Blanks

Quality, controlled  
for your safety





**DICOM data**  
Import DICOM data to CAD and IMPLA 3D softwares



**zebris Functional Jaw Movement Analysis**  
Import DICOM data to CAD and IMPLA 3D softwares



**IMPLA 3D Navigation**  
Import surgical template data to CAD software



**Tizian Smart-Scan**  
Import scan data to CAD software



**Tactile Scanner**  
Import scan data to CAD software

**Tizian Creativ RT CAD-Software**



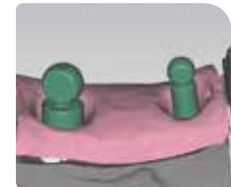
**Intraoral scan data**  
Import compatible data to CAD software



**3D Printer**  
Printing of models, dental restorations and drilling templates



**Tizian Milling Systems**  
Milling the CAD data



**IMPLA Scan-Abutments**  
Transfer implant positions to CAD software

## The “Complete Digital Workflow” – all this from Schütz Dental

No matter if you are an implantologist, a dentist or a dental technician: Set yourself apart from your competitors.

- **High level of safety:** Direct data import minimizes the error rate and increases precision.
- **New potential customers:** Due to added public relations value and new technologies.
- **Increase your turnover:** The system helps selling private dental services.
- **Predictable success:** From the very moment you start to plan, all the necessary criteria for fantastic aesthetics and an excellent function are made accessible.
- **Independence:** The open systems keep the user independent.
- **Better cost efficiency:** Speed up all processes with the direct import of data to the software.
- **Excellent support:** As all components come from the same supplier, you always have the right person at hand to help you.
- **Consistent documentation:** This is especially important for implant cases

## Tizian Blank 98 mm, Zirconium Dioxide



Art. no.	Height	Sintering temperature
624947	10 mm	1480 °C
624955	12 mm	1480 °C
624948	14 mm	1480 °C
624956	16 mm	1480 °C
624949	18 mm	1480 °C
624957	20 mm	1480 °C
624927	22 mm	1480 °C
624928	25 mm	1480 °C

Opaque zirconium dioxide for the production of full ceramic dental restorations such as primary conus crowns and telescopic crowns, crowns and bridges (max. 3 connecting units in the anterior area and max. 2 connecting units in the posterior area), abutments, inlays. Can easily be veneered with ceramics (coefficient of thermal expansion:  $10.6 \times 10^{-6}K^{-1}$ ).

## Tizian Blank Occlusal 98 mm, Zirconium Dioxide



Art. no.	Height	Sintering temperature
624495	10 mm	1600 °C
624496	12 mm	1600 °C
624482	14 mm	1600 °C
624497	16 mm	1600 °C
624498	18 mm	1600 °C
624479	20 mm	1600 °C
624480	22 mm	1600 °C
624481	25 mm	1600 °C

Mildly translucent zirconium dioxide for the production of full ceramic dental restorations such as primary conus crowns and telescopic crowns, crowns and bridges (max. 3 connecting units in the anterior area and max. 2 connecting units in the posterior area), bridges with gingiva attachment, abutments, inlays. This blank was developed especially for full zirconium dioxide restorations without ceramic veneer (excellently suited to the coloring technique). Can easily be veneered with ceramics (coefficient of thermal expansion:  $10.6 \times 10^{-6}K^{-1}$ ).

## Tizian Blank Translucent 98 mm, Zirconium Dioxide



Art. no.	Height	Sintering temperature
220075	10 mm	1530 °C
220076	12 mm	1530 °C
220077	14 mm	1530 °C
220080	16 mm	1530 °C
220081	18 mm	1530 °C
220082	20 mm	1530 °C
220088	22 mm	1530 °C
220083	25 mm	1530 °C

Translucent zirconium dioxide for the production of full ceramic dental restorations such as primary conus crowns and telescopic crowns, crowns and bridges (max. 3 connecting units in the anterior area and max. 2 connecting units in the posterior area), abutments, inlays. This blank was developed especially for full zirconium dioxide restorations without ceramic veneer (excellently suited to the coloring technique). For stability reasons, we do not recommend to use this material for the production of massive restorations, for instance, bridges with gingiva attachment. The blank can easily be veneered with ceramics (coefficient of thermal expansion:  $10.6 \times 10^{-6}K^{-1}$ ).

## Tizian Blank High Translucent 98 mm, Zirconium Dioxide



Art. no.	Height	Sintering temperature
220340	14 mm	1450 °C
220341	16 mm	1450 °C
220342	20 mm	1450 °C

Highly translucent zirconium dioxide which is ideally suited to the production of fully anatomic restorations as well as to the production of reduced structures which are to be veneered with ceramics. Indications: metal-free partial and full individual crowns, bridges (up to three units), inlays, onlays, veneers and implant supra-constructions for the restoration of individual teeth in the anterior and posterior area.

## Tizian Blank Color 98 mm, pre-colored Zirconium Dioxide



Art. no.	Height	Color	Sintering temperature
220300	10 mm	low (A1, A2)	1450 °C
220301	14 mm	low (A1, A2)	1450 °C
220302	18 mm	low (A1, A2)	1450 °C
220303	20 mm	low (A1, A2)	1450 °C
220304	25 mm	low (A1, A2)	1450 °C
220305	10 mm	medium (A3, B3)	1450 °C
220306	14 mm	medium (A3, B3)	1450 °C
220307	18 mm	medium (A3, B3)	1450 °C
220308	20 mm	medium (A3, B3)	1450 °C
220309	25 mm	medium (A3, B3)	1450 °C
220310	10 mm	intensive (C2, C3)	1450 °C
220311	14 mm	intensive (C2, C3)	1450 °C
220312	18 mm	intensive (C2, C3)	1450 °C
220313	20 mm	intensive (C2, C3)	1450 °C
220314	25 mm	intensive (C2, C3)	1450 °C

Opaque, pre-colored zirconium dioxide for the production of full ceramic restorations such as primary conus crowns and telescopic crowns, crowns and bridges (max. 3 connecting units in the anterior area and max. 2 connecting units in the posterior area), abutments, inlays. Can easily be veneered with ceramics (coefficient of thermal expansion:  $10.6 \times 10^{-6}K^{-1}$ ).

## Blank Zirconium Dioxide 98 mm, presintered



Art. no.	Height	Color	Sintering temperature
220315	14 mm	LL1 (B1)	1450 °C
220316	18 mm	LL1 (B1)	1450 °C
220317	20 mm	LL1 (B1)	1450 °C
220318	14 mm	LL2 (B2/C2)	1450 °C
220319	18 mm	LL2 (B2/C2)	1450 °C
220320	20 mm	LL2 (B2/C2)	1450 °C
220321	14 mm	LE3 (A2, A3, D3)	1450 °C
220322	18 mm	LE3 (A2, A3, D3)	1450 °C
220323	20 mm	LE3 (A2, A3, D3)	1450 °C
220324	14 mm	LE2 (A1, C1, D2)	1450 °C
220325	18 mm	LE2 (A1, C1, D2)	1450 °C
220326	20 mm	LE2 (A1, C1, D2)	1450 °C
220327	14 mm	LL3 (A3,5, B3, C3, D4)	1450 °C
220328	18 mm	LL3 (A3,5, B3, C3, D4)	1450 °C
220329	20 mm	LL3 (A3,5, B3, C3, D4)	1450 °C

Translucent, precolored zirconium dioxide for the production of full ceramic dental restorations such as primary conus crowns and telescopic crowns, crowns and bridges (max. 3 connecting units in the anterior area and max. 2 connecting units in the posterior area), inlays.

## Tizian Blank Zirconia Reinforced Composite 98 mm



Art. no.	Height	Color
220107	16 mm	A1
220108	20 mm	A1
220109	16 mm	A2
220110	20 mm	A2
220111	16 mm	A3
220112	20 mm	A3
220113	16 mm	A4
220114	20 mm	A4
220115	16 mm	B2
220116	20 mm	B2

For long-term temporaries (for up to 2 years)

a) up to 16-unit anterior and posterior crowns and bridges, fully anatomic or reduced, b) only up to 2 bridge-units in the posterior sector, c) free-end bridges with no more than one premolar attachment

For small permanent restorations\*

a) individual crowns, b) inlays, c) onlays, d) veneers, e) bridges with a maximum of 3 units

\*We strongly recommend to veneer these with an incisal material.

## Tizian Blank PMMA 98 mm



Art. no.	Height	Color
220062	15 mm	A1 <sup>1)</sup>
220064	20 mm	A1 <sup>1)</sup>
220063	15 mm	A2 <sup>1)</sup>
220065	20 mm	A2 <sup>1)</sup>
220066	20 mm	A3 <sup>1)</sup>
220074	20 mm	A3,5 <sup>1)</sup>
220067	20 mm	B1 <sup>1)</sup>
220089	25 mm	rosa <sup>2)</sup>
220078	30 mm	rosa <sup>2)</sup>
220068	15 mm	transpa <sup>3)</sup>
220069	20 mm	transpa <sup>3)</sup>
220079	25 mm	transpa <sup>3)</sup>

<sup>1)</sup> Production of temporaries (crowns and bridges) with a wearing time of up to 12 months.

<sup>2)</sup> Production of prosthetic bases that can be individualized with colors.

<sup>3)</sup> Production of splints and models for the casting technology which burn out residue-free.

## PMMA Multi Blank U



Art. no.	Height	Color
220366	12 mm	A1
220369	12 mm	A2
220372	12 mm	A3
220367	20 mm	A1
220370	20 mm	A2
220373	20 mm	A3

**On request.**

Mill temporary crowns and bridges for the anterior and posterior area with PMMA Multi Blanks U. These high quality blanks made from PMMA and pigments have a color gradient from dentin to incisal which will give you an outstanding aesthetic almost automatically during milling.

This material is excellently suited to the production of temporary crowns and bridges in the anterior and posterior areas.

## Tizian Blank Polycarbonat 98 mm



Art. no.	Height	Color
220352	16 mm	clear
220358	16 mm	A2
220353	20 mm	clear
220355	16 mm	A1
220356	20 mm	A1
220359	20 mm	A2

For the production of bite splints and temporary crowns and bridges in the anterior and posterior area (maximum wearing time: 12 months). The flexibility of the resin compensates for possible slightly diverging insertion vectors.

## Tizian Blank PEEK 98 mm



Art. no.	Height
220094	10 mm
220091	16 mm
220092	20 mm

For the production of friction elements on telescopic restorations and attachments.

## Tizian Blank PEEK White 98 mm



Art. no.	Height
220095	10 mm
220096	16 mm
220097	20 mm

Ideally suited to the production of reduced crowns and bridges (with a maximum of two connecting units), telescopic primary and secondary crowns, copings, frameworks for composite-veneered bridges and for secondary structures on bars.

## Tizian Blank NEM 98 mm (non-precious alloy)



Art. no.	Height
220105	8 mm
220100	10 mm
220101	12 mm
220118	13,5 mm
220102	15 mm
220117	16 mm
220103	18 mm
220104	20 mm

For crowns and bridges. Special designs such as cantilever bridges and attachment parts are produced at the responsibility of the dentist (evaluation of stability).

## Tizian Blank Titanium 98 mm, Grade 2



Art. no.	Height
624484	10 mm
624485	12 mm
624491	15 mm
624486	18 mm

For crowns and bridges in the anterior and posterior area with up to 16 units, for full crowns, primary conus or telescopic crowns, inlays, onlays, cantilever bridges, inlay bridges, supra constructions and tertiary frameworks.

## Tizian Blank Titanium 98 mm, Grade 4



Art. no.	Height
624487	10 mm
624488	12 mm
624490	15 mm
624489	18 mm

For crowns and bridges in the anterior and posterior area with up to 16 units, for full crowns, primary conus or telescopic crowns, inlays, onlays, cantilever bridges, inlay bridges, supra constructions and tertiary frameworks, implant supported constructions and bar constructions.

## Tizian Blank Modell 98 mm, Polyurethane



Art. no.	Height
220040	18 mm
220041	20 mm
220042	24 mm

For the production of dental models, including stumps and model bases.

## Tizian Blank Wax 98 mm, Wax



Art. no.	Height	Color
220034	10 mm	grey
220035	16 mm	grey
220036	20 mm	grey
220037	25 mm	grey
220071	16 mm	brown
220070	20 mm	brown
220030	10 mm	white
220031	16 mm	white
220032	20 mm	white
220033	25 mm	white

For the production of wax models which burn out residue-free (lost mold technique in pressing ceramics and casting technology, i.e. for the production of crowns and bridges) and for wax ups.



Schütz Dental GmbH • Dieselstr. 5-6 • 61191 Rosbach/Germany • Tel. +49 (0) 6003 814-365 • Fax +49 (0) 6003 814-907  
[www.schuetz-dental.com](http://www.schuetz-dental.com) • [export@schuetz-dental.de](mailto:export@schuetz-dental.de)